

EXPORT
MADE IN U.S.A.

GROW  MORE®

DIRECTIONS

FOR USE ON ALL CROPS

Vegetable Crops: Beans, cucumbers, lentils, melons, onions, peppers, sweet corn, tomatoes, broccoli, brussel sprouts, cauliflowers, cabbage, celery, lettuce, spinach, potatoes, asparagus, carrots, parsley, kales, endives.

Row and Field Crops: Cotton, soybeans, field corn, peanuts, sugar beets, pineapples, sweet potatoes, hops, mints, tobacco, sugarcanes, sunflowers and clover.

Fruits and Nuts (tropical & subtropical): Almonds, walnuts, pecans, macadamia nuts, chestnuts, apples, pears, peaches, plums, apricots, nectarines, cherries, avocados, figs, mangos, Filbert's papayas, kiwis, strawberries, blackberries, blueberries, raspberries and grapes.

Citrus: Oranges, lemons, limes, grapefruits, tangerines and tangelos.

Green Houses and Nurseries

METHOD OF APPLICATION:

For best results, apply in fertigation system or as soil drench around the base of the plant.

PREPLANT SOIL INCORPORATED METHOD:

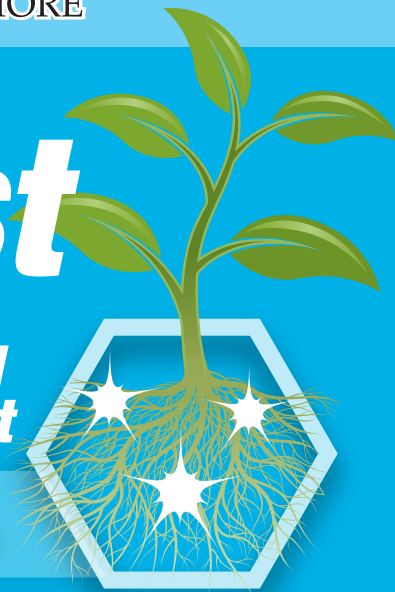
Fertigation, Sprinkler, Drip Irrigation or Soil Drench:

Use sufficient water to wet soil to a depth for adequate subsurface penetration of Resyst to the root zone 6 to 8 inches (15 to 20 cm) or where plant pathogenic nematodes tend to proliferate.

Resyst

Nematode Control Root Biostimulant

**Promotes Plant Growth
& Vigorous Root System**



GUARANTEED ANALYSIS

Total Organic Nitrogen	0.16%	Available Phosphate P ₂ O ₅	0.25%
Total Carbon	5.70%	Soluble Potash K ₂ O	0.32%
Approximate Organic Matter ..	13.56%	Sodium	0.020%
Amino Acid Complex	1.00%	Magnesium	0.018%

POST-PLANT APPLICATION:

This method is recommended when treating transplants, established planting such as vines, trees, vegetable or field crops.

APPLICATION RATES

Heavy Infestation If soil analysis for nematodes has determined a high count or if using Resyst for the first time, we recommend the knock down rate which consists of an initial dose of 15 to 20 Liters of Resyst per hectare followed by 3 additional applications of 1.5 to 2 Liters/1000 sq ms. Applied at 15-day intervals during the active growing season or as needed.

Maintenance Treatment: After control has been established, a minimum of 3 applications of 1.5 to 2 Ltrs/1000 sq ms. during the growing season are recommended. The intervals should be every 15 days.

CAUTION: KEEP OUT OF REACH OF CHILDREN

This seller hereby represents and warrants that the fertilizers shall be manufactured and shipped to purchaser in a form suitable for application to plants, trees and other agricultural crops. Seller further warrants that the fertilizer product shall meet the guaranteed minimum analysis as set forth on the product label. However, this warranty does not extend to the use of the product contrary to label directions and the buyer assumes the risk of any such use.

Information regarding the contents and levels of metals in this product is available on the internet at www.aapfco.org/metals.htm

NET WEIGHT: ■ 1 Gallon ■ 4x1 Gallon



Manufactured by:
GROW  MORE
15600 New Century Drive,
Gardena, CA, U.S.A. 90248
www.growmore.com